



# Stealing your Smile: Substance Abuse and your Teeth

Dr. Kirandeep Kaur, DDS,  
Janis Falesch, RDH  
Shari Danielson, MBA

- Drugs can cause tooth damage





# Stealing your Smile: Substance Abuse and your Teeth

**ANY DRUG USE THAT CAUSES PERSON TO NEGLECT THEIR PERSONAL HYGIENE, DIET AND DENTAL CARE CAN SIGNIFICANTLY INCREASE RISK OF DENTAL PROBLEMS.**

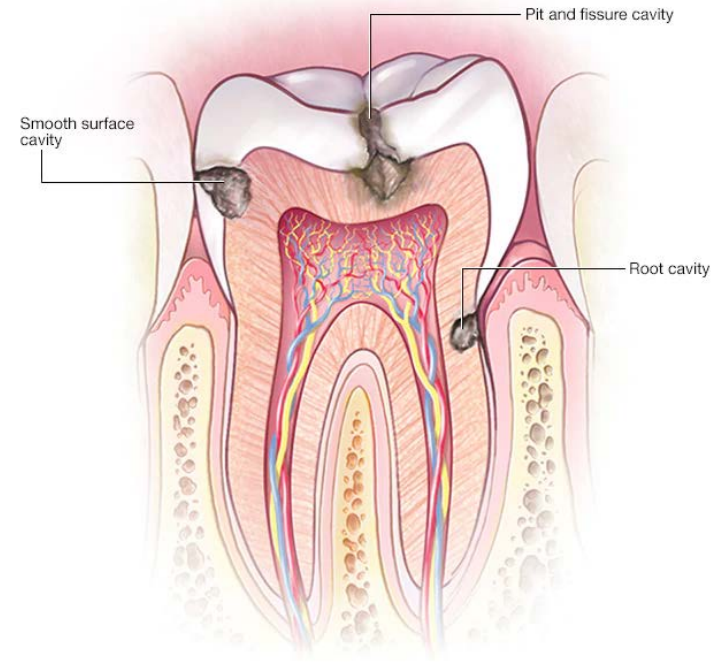
# Drug use and dry mouth

## Role of Saliva

- Protect, lubricate and cleanse the oral mucosa - Has a washing effect prevention food particles from sitting on teeth.
- Reduce the population of bacteria in mouth
- Neutralizes mouth acids that cause tooth decay
- Protect the teeth against decay - contains substance crucial to ongoing process of remineralisation
- Support and facilitate our sense of taste

# Various oral manifestations

- Dental caries.



© MAYO FOUNDATION FOR MEDICAL EDUCATION AND RESEARCH. ALL RIGHTS RESERVED.

# Various oral manifestations

- Periodontitis



# Drugs that carry a high risk to your oral health include

- Tobacco
- Cannabis
- Alcohol
- Cocaine
- Ecstasy
- Heroin
- Methamphetamines

# Tobacco



**WARNING**  
SMOKING DAMAGES  
YOUR TEETH



Smoke contains **benzene,**  
**nitrosamines, formaldehyde**  
and **hydrogen cyanide**



**MALE SMOKER AGED 50**



# Tobacco

- Tobacco stains
- Tobacco pouch keratosis
- Stomatitis nicotina
- Reverse smoker palate

# Tobacco Stains



# Tobacco pouch keratosis

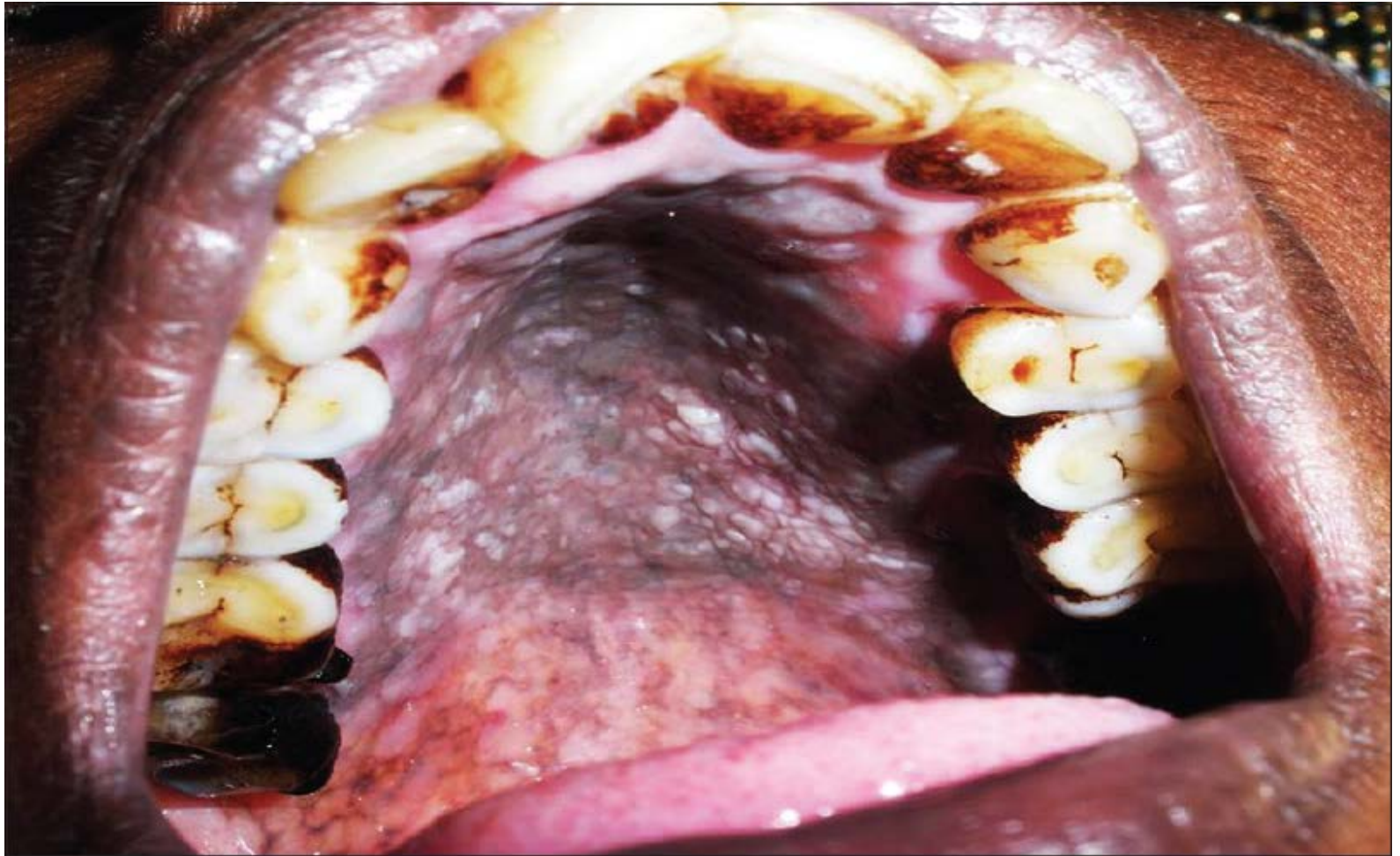


**Fig. 3.** Lower labial sulcus of a patient showing tobacco pouch

# Stomatitis Nicotina



# Reverse smoker's palatosis





# Cocaine



# Alcohol



Don't Let Alcohol  
**WRECK YOUR MOUTH**

# Alcohol

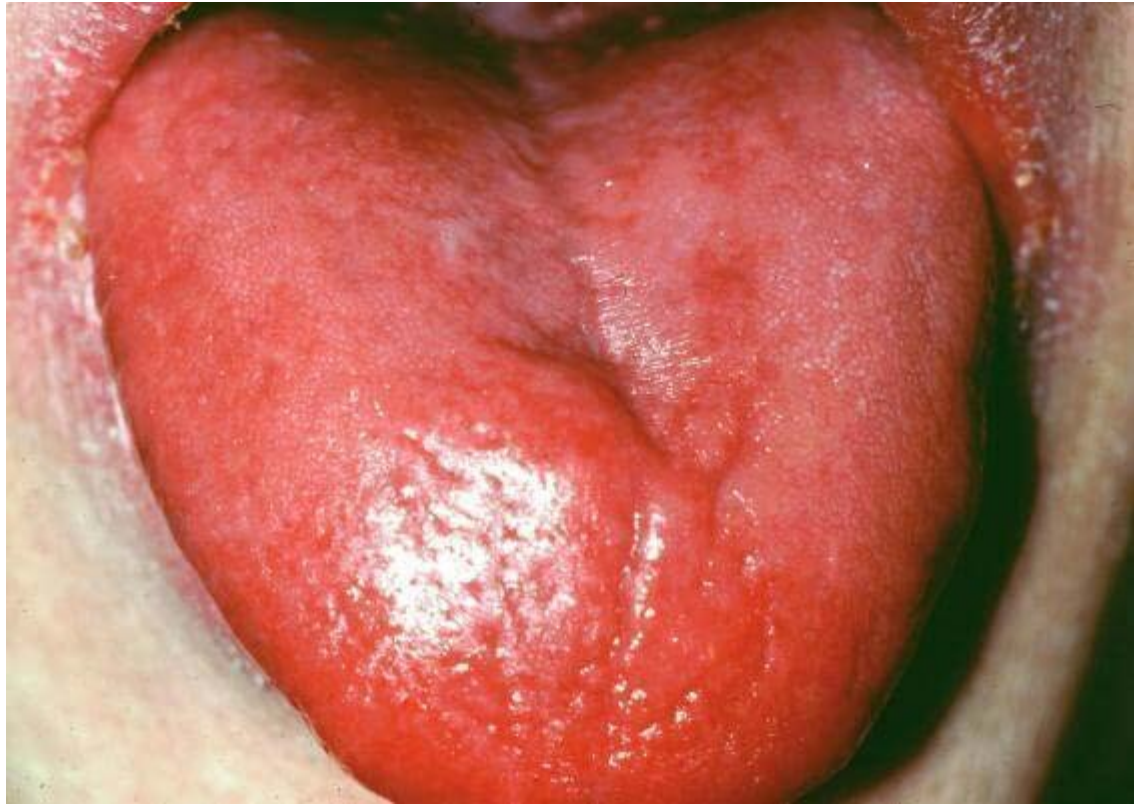
- Effects of alcohol on mouth
  - Change in taste sensation
  - Tongue inflammation ( glossitis )
  - Angular cheilitis ( inflammation of corners of mouth )
  - Dental erosion
  - Periodontal disease
  - Sialadenosis ( swelling of salivary glands)
  - Dental caries.



# Dental Erosion



# Glossitis



# Angular cheilitis



## EFFECTS OF HEAVY ALCOHOL MISUSE

TOOTH LOSS ■  
GUM DISEASE ■  
TOOTH DECAY ■

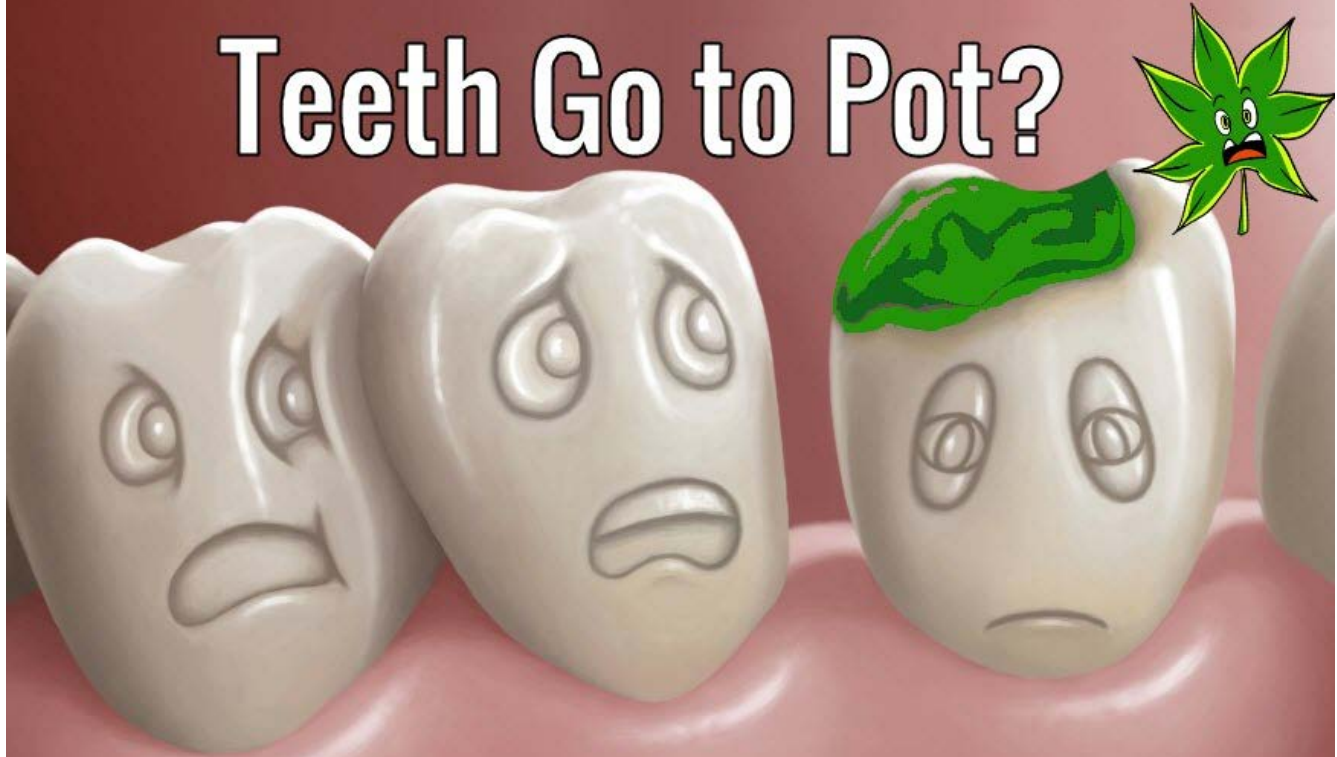


Alcohol dehydrates the cell walls and for smokers, increases the absorption of tobacco carcinogens through the mouth tissues.

Deficiencies in nutrients associated with heavy alcohol consumption can lower the ability to utilize antioxidants to prevent cancerous formations.

# Cannabis

Will Cannabis Make Your  
Teeth Go to Pot?







# EFFECTS OF WEED

MUNCHIES

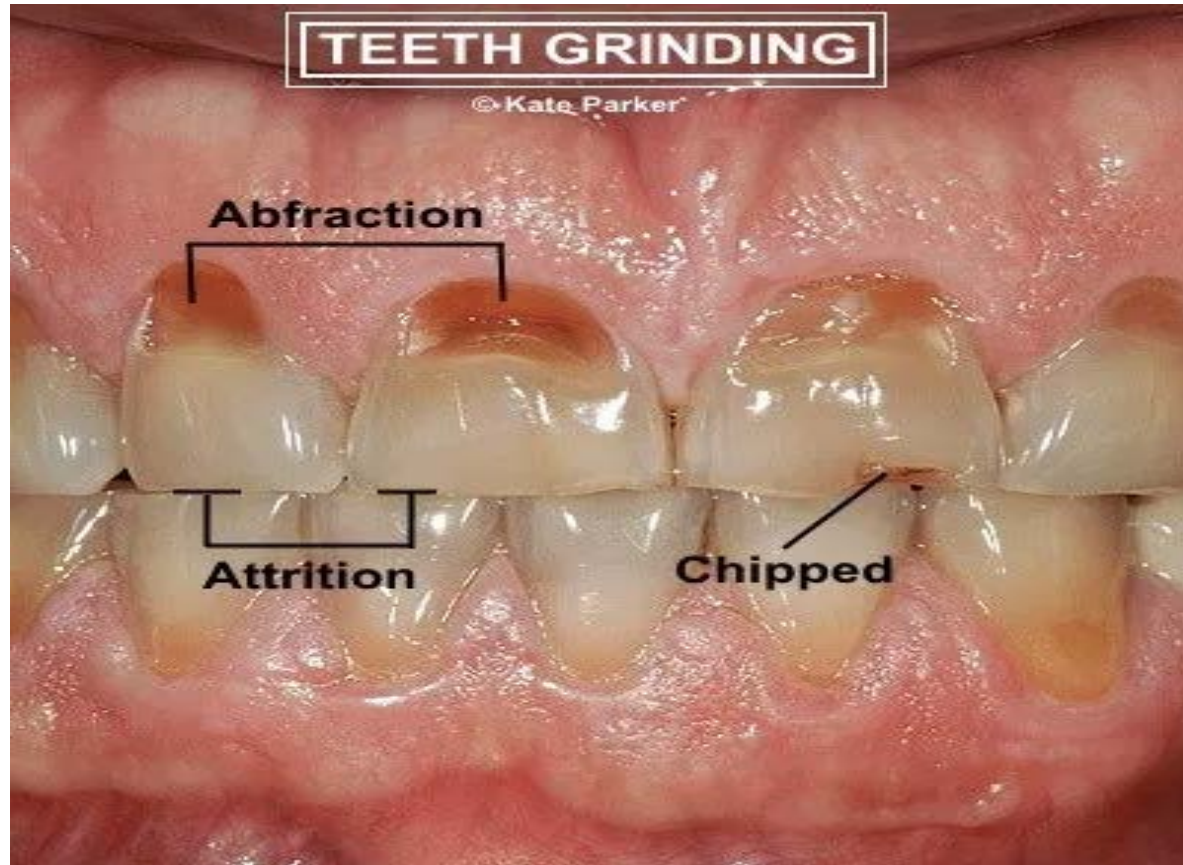
SMELL BAD

ROTTED TEETH

IMPAIRED JUDGMENT

PANIC/ANXIETY

# Ecstasy



# Heroin



**FIGURE 5:** Hyperpigmentation of the tongue in heroin user





# Methamphetamines



# Treatment

- Professional treatment depends on the particular drug and its effects on your teeth and gums

# Drug use and prevention of tooth and gum problems

- Talk to your doctor
- Avoid soda consumption
- Cut back sweet / sticky foods
- Chew sugar free gum
- Regular brushing and flossing
- Visit your dentist at least twice a year
- Minimize alcohol/ quit smoking

# Where to get help

- Urgent Care Clinics/Emergency Room.
- Primary Care Physician.
- The Human Service Center (Rhineland) provides services to persons of Forest, Oneida and Vilas Counties. Services include: behavioral health services, mental health therapy, and alcohol & drug abuse counseling.
- Inpatient therapy: Koinonia (Rhineland). Programs include: group therapy, individual therapy, family therapy, spirituality, transitional program, support groups and personal wellness.
- Outpatient therapy: Ascension Koller Behavioral Health (Rhineland)
- Support Groups: AA, NA.

# References :

- Delta dental of California
- American Dental Association
- Journal of Alcoholism and Drug Dependence
- Oral effects of Drug Abuse ( Critical Reviews in Oral Biology and Medicine )



- *Questions??*